



Bumblebee Quiz

True or False

- | | |
|---|-------|
| 1. Bumblebees live in hives and make honey | False |
| 2. Male bumblebees don't have a stinger | True |
| 3. Bumblebees have four wings | True |
| 4. Queen bumblebees can live for many years | False |
| 5. Queen bumblebees hibernate underground | True |
| 6. All bumblebees are black and yellow | False |
| 7. Worker bumblebees are all male | False |
| 8. Bumblebee colonies are larger than honeybee colonies | False |
| 9. Different species of bumblebee have different size tongues | True |
| 10. Bumblebees have smelly feet | True |
| 11. Bumblebees die when they sting | False |

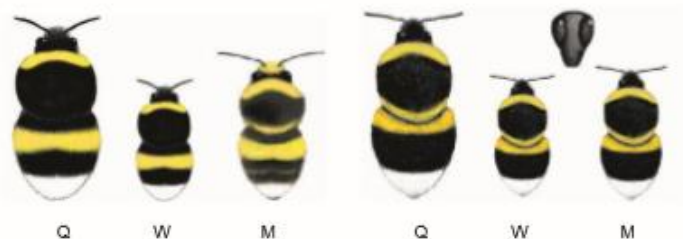
Questions

12. How many species of bumblebees are native to the UK?
25
13. What percentage of Britain's meadows have been lost since WWII?
97%
14. Which bumblebee species was once extinct in the UK in 1988 but has now been reintroduced in Dungeness?
Short-Haired bumblebee

Bumblebee identification

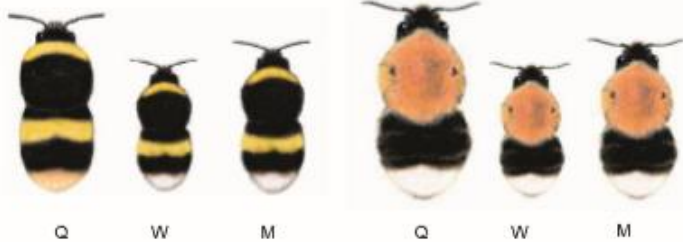
Identifying bumblebees

Kent is a very special county for its diversity of bumblebees. The following species are widespread throughout Kent and the UK. These are the most common bumblebees you will frequently find in your gardens and greenspaces!



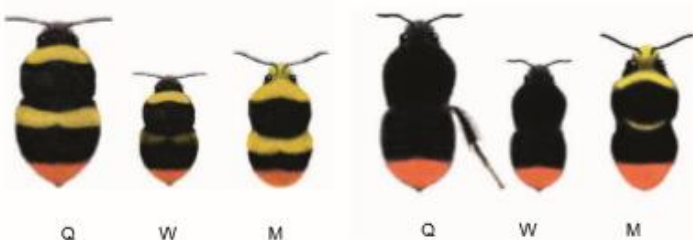
White-tailed bumblebee
Bombus lucorum

Garden bumblebee
Bombus hortorum



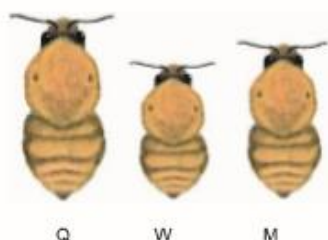
Buff-tailed bumblebee
Bombus terrestris

Tree bumblebee
Bombus hypnorum



Early bumblebee
Bombus pratorum

Red-tailed bumblebee
Bombus lapidarius



Common carder bee
Bombus pascuorum

Key
Q Queen
W Worker
M Male

15) What species is this?



Tree bumblebee

16) What species is this?



Common Carder bee

17) What species is this?



White/ Buff tailed bumblebee

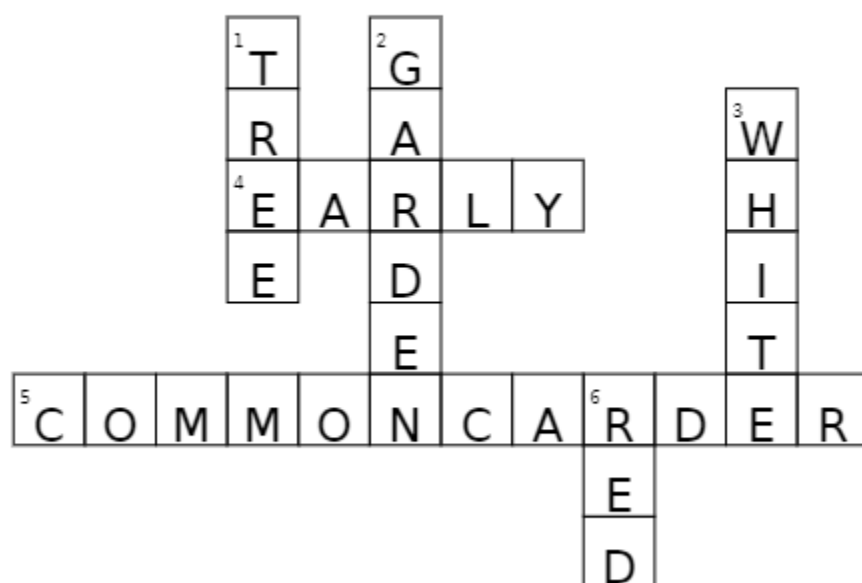
18) What species is this?



Garden bumblebee

19)

Bumblebee Crossword



Down:

1. This species first arrived in the country in 2001.
2. Found often frequent in green spaces, where it is one of two common species found visiting foxglove.
3. Workers are also practically indistinguishable from another species of bumblebee, although this species does not have yellow hairs in the tail.
6. Queens and workers are jet-black, with a bright colour tail covering up to 50% of the abdomen.

Across:

4. This is a spring specialist, emerging from hibernation each year beginning of the season.
5. The only one of three all-ginger bumblebees to be a member of the 'Big 7' widespread and abundant species.

