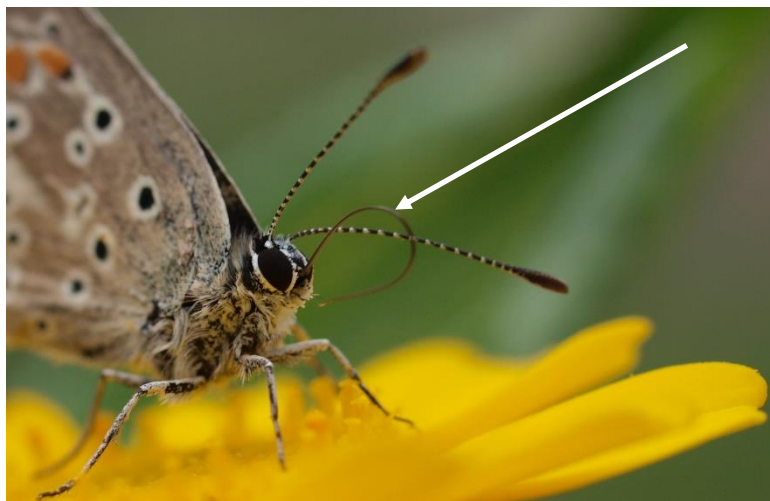


### Butterflies Quiz

1. How many resident species of butterflies does the UK have?
2. In what year was the Butterfly Conservation Organisation established?
3. True or false the word butterfly is commonly believed to have been derived from 'butter coloured fly' which has been attributed to the colour of the male Brimstone butterfly?
4. What species of butterfly is this in the picture below?



5. Which continent is the only continent which doesn't have any butterflies living on it?
6. The Large Copper, Mazarine Blue, Black-veined White, Large Blue and Large Tortoiseshell all share what in common?
7. The Common Nettle is the foodplant for 6 British butterfly species, how many can you name?
8. What is the name of the body part a butterfly uses to feed on nectar as indicated by the arrow in the picture below?



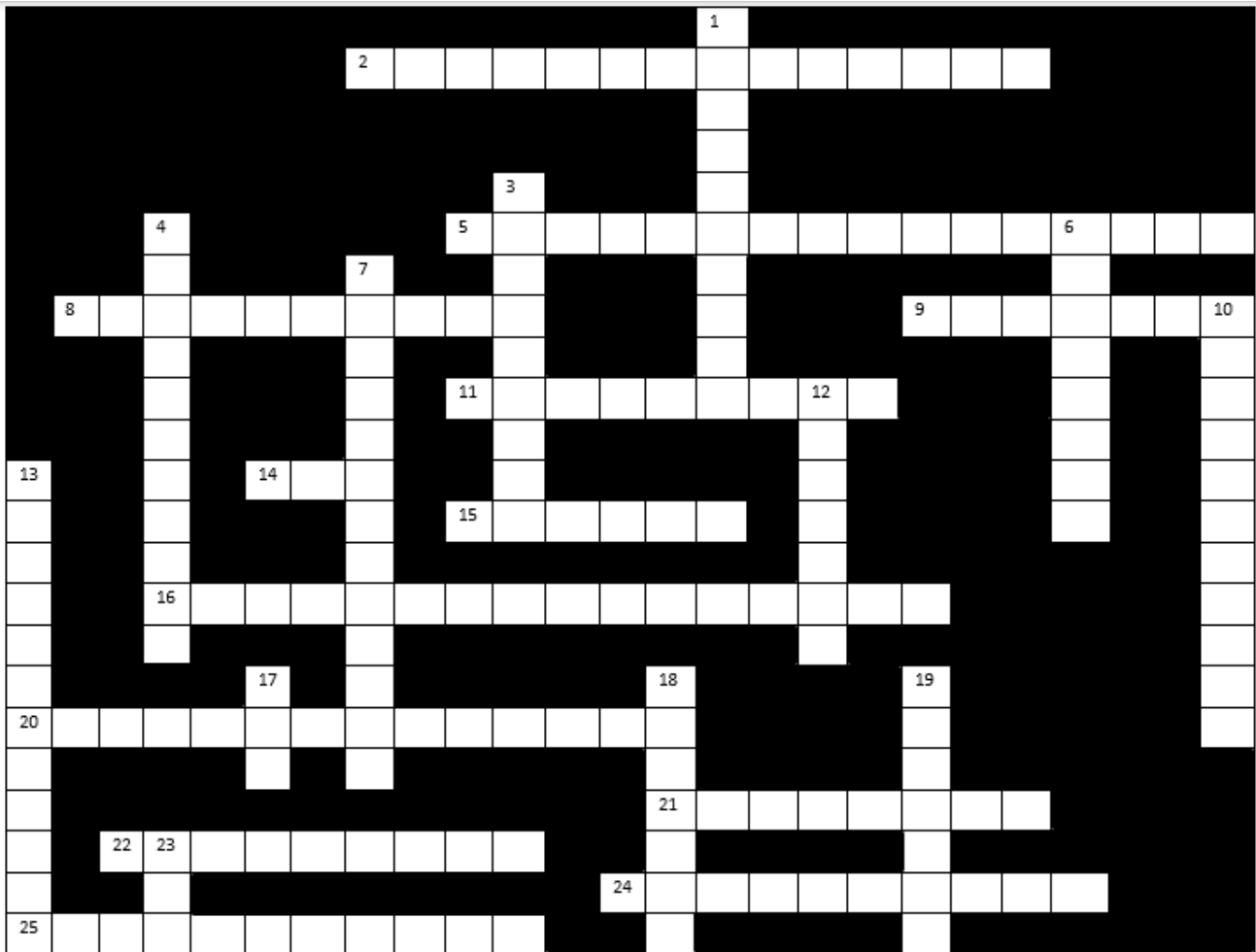
9. True or false most butterflies can taste using their feet?
10. The lifecycle of many blue butterflies e.g. Chalkhill Blue and Large Blue are linked to which group of social insects?
11. Green, Brown, Black, White-letter, Purple all precede what word to make the names of 5 species of butterfly?
12. Is the Purple Emperor butterfly in the picture below male or female?



13. The term Cabbage White is often used by gardeners to refer to which two species of butterfly?
14. Which famous British wildlife presenter is the president of the Butterfly Conservation Organisation?
15. True or false butterflies are warm blooded and can fly in any temperatures



### British Sea Life Crossword



#### Down

1. After building these up during exercise you may want to flap one of these to cool down (3,6)
3. This wobbly gelatine dessert uses this object to brush its hair (4,5)
4. A wax mark on a document found in a sheltered body of water where ships and boats can be docked (7,4)
6. One of the little mermaid's sidekicks (8)
7. Produced by oak trees. Clinging to rocks and sides of ships I must be scraped off (5,8)
10. I live in a body of saltwater and am found in sandwiches, salads and sometimes on people's eyelids (3,8)
12. Rhymes with mobster and sleeps with the fishes (7)
13. This dangerous loan lender also likes to lie exposed to warmth and light (7,5)
17. A beam of light or radiation (3)
18. This salty water inhabiting slow mollusc is the bane of gardeners (3,4)
19. Lacks sufficient money to buy this fish and chips staple (4,3)
23. Electric and jellied (3)



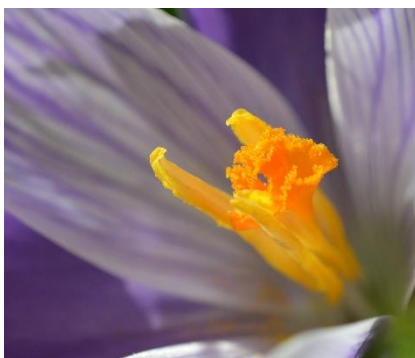
**Across**

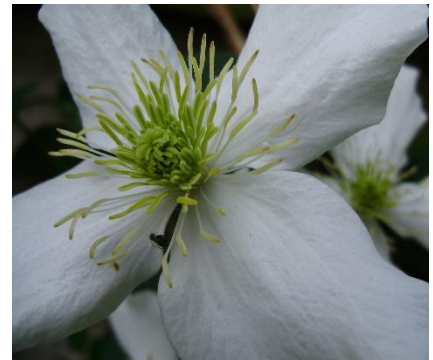
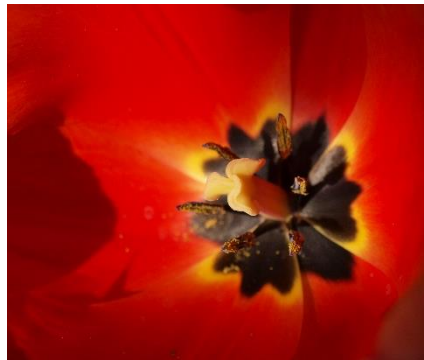
- 2.** This sea creature sounds like the word enemy and plays a brass instrument (7,7)
- 5.** Use me to find north or your way to this wobbly fishy gelatine dessert (7,9)
- 8.** An isolated, loner Cancerous zodiac sign (6,4)
- 9.** A soft bodied, football match predicting multi limbed mollusc (7)
- 11.** A zesty bottom of a shoe (5,4)
- 14.** Press against something lightly several times with a piece of absorbent material in order to clean or dry it (3)
- 15.** The world is your.... (6)
- 16.** This female SNP leader and first minister of Scotland can be found in this ocean that separates the Americas from Europe and Africa (8,8)
- 20.** An absorptive cleaning item which Woods and McIlroy might hit on the green (4,4,6)
- 21.** A saltwater mare but it is the males who give birth (8)
- 22.** A raggedly dressed mischievous roguish child who lives in a body of saltwater (3,6)
- 24.** A dog who looks after the sick and injured (5,5)
- 25.** Sometimes becomes beached this murderer does (6,5)



### Flower Picture Match

Can you match the zoomed in photo to the name of the flower?





**Daisy**

**Poached Egg Plant**

**Love in the Mist**

**Tulip**

**Water Lily**

**Clematis**

**Foxglove**

**Purple Iris**

**Verbena**

**Welsh Poppy**

**Echinacea**

**Crocus**

**Daffodil**

**Common Spotted Orchid**



### British Woodland Birds Word search

A	M	S	I	Q	Z	A	M	V	C	W	N	B	R	J	A	Z	R	L	K
B	T	H	T	P	A	J	K	L	M	N	O	P	Q	R	S	T	B	Q	J
G	G	O	Z	I	I	C	D	E	T	I	T	T	A	E	R	G	U	C	Q
R	P	Y	G	H	T	B	J	K	F	G	H	I	J	K	L	M	N	V	Y
E	Y	F	X	Y	Z	A	I	L	M	N	O	W	P	Q	E	R	O	W	B
A	L	V	W	E	F	G	H	Q	H	R	S	O	U	V	W	R	P	X	K
T	U	U	B	L	A	C	K	C	A	P	T	O	L	M	X	E	Q	Y	S
S	K	T	D	C	N	O	T	P	H	I	J	D	K	N	Y	P	R	Z	C
P	F	S	R	B	M	A	E	F	G	P	Q	R	S	O	Z	E	S	A	O
O	I	E	Q	A	H	C	D	M	N	O	G	F	T	P	A	E	T	B	X
T	N	X	P	T	L	B	C	H	A	F	F	I	N	C	H	R	U	S	D
T	C	N	U	Z	K	A	L	U	B	C	D	E	U	Q	B	C	V	O	R
E	T	N	O	Y	J	Z	N	A	A	U	T	E	V	R	C	E	W	N	D
D	J	M	N	X	I	Y	K	O	S	T	H	R	W	S	D	E	X	G	S
W	I	L	M	W	H	X	J	R	E	U	I	J	E	T	E	R	Y	T	E
O	T	A	H	T	U	N	I	Q	A	G	V	T	X	E	F	T	Z	H	Y
O	H	K	L	V	G	W	H	O	Z	Y	I	K	Y	U	C	S	A	R	P
D	T	J	K	U	F	V	G	P	O	T	W	P	Z	V	G	R	B	U	D
P	B	K	C	A	P	U	F	O	E	X	I	L	D	W	H	T	E	S	T
E	S	I	J	T	E	T	E	U	I	N	M	E	A	O	I	U	C	H	L
C	G	W	I	S	D	S	L	D	C	B	A	Z	Y	X	O	V	D	E	C
K	X	D	H	R	C	B	R	Q	P	O	N	M	L	K	J	W	J	C	X
E	O	V	G	Q	B	A	Z	Y	P	I	G	E	U	N	X	W	A	D	P
R	F	H	C	P	O	N	M	L	K	J	I	H	G	F	E	D	Y	E	I
C	U	W	L	W	O	Y	N	W	A	T	G	U	B	F	E	A	T	F	H
D	E	N	V	E	N	V	F	R	A	Z	Q	E	U	M	D	W	O	F	G

Can you find all the woodland birds listed below in the word search? There is also a bonus bird which is not on the list for you to find.

Great Spotted Woodpecker

Great Tit

Blue Tit

Wood Pigeon

Treecreeper

Nuthatch

Song Thrush

Blackcap

Tawny Owl

Chaffinch

**Bonus bird:**