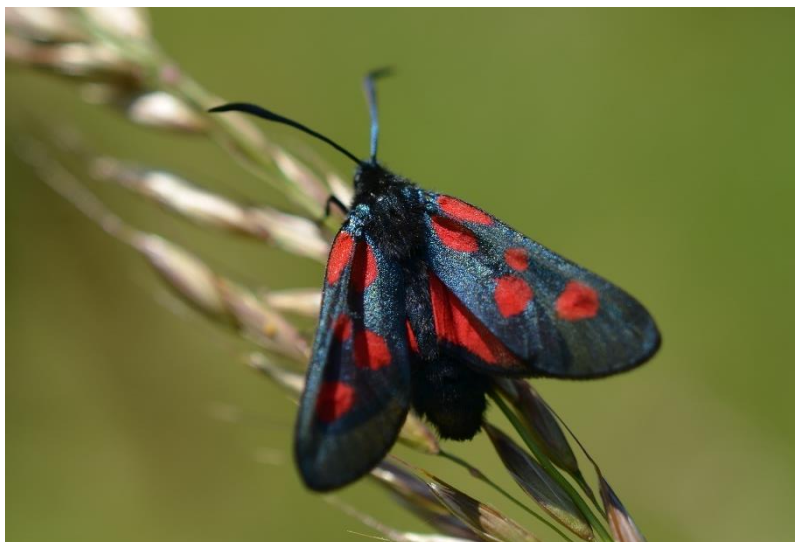


### Moths Quiz

1. How many species of moth have been estimated to occur in the UK?
2. The hard-outer casing in which a moth caterpillar will develop into an adult moth is called?
3. True or false there are more than double the number of day flying 'larger' moth species in the UK than there are butterflies?
4. What species of dayflying moth is this? Hint it shares its name with a bird



5. How many moth caterpillars can a family of blue tit chicks consume?
6. Many moths have feathery antenna. In males what are these antennae mostly used for?
7. The Cinnabar moth caterpillar feeds on which plant? Hint this plant is often removed from sites because it can be toxic if eaten by farm animals.
8. What is the name of this moth? Hint its name also includes its spots



9. True or false all moths have a proboscis (tongue for drinking nectar)?
10. The buff-tip moth has excellent camouflage because it looks like what?
11. Scarlet, Ruby, Jersey and Wood all precede which word to make the names of four moth species?
12. Can you name the species of moth this impressive caterpillar will develop into?

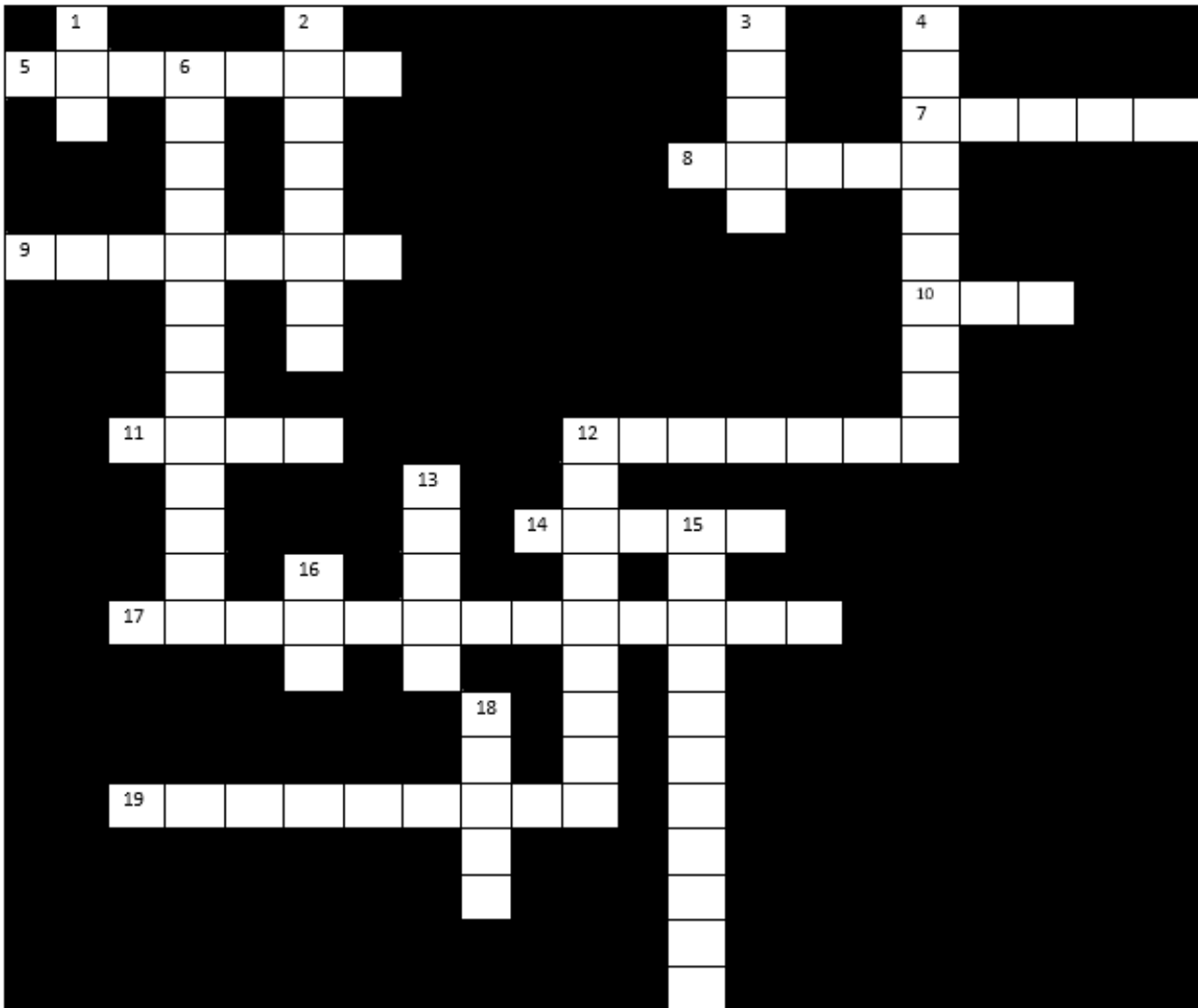


13. What is Britain's heaviest moth? Hint its name is also a farm animal
14. True or false during the industrial revolution peppered moths began to become darker in colouration due to the increased soot on trees?
15. The damage done to the leaves of this tree was caused by which moth?





### British Trees Crossword



#### Down

1. A cube shaped container (3)
2. A pointed growth on top of an animal's head and a wooden structural support (8)
3. Mr Bean or Edmund Blackadder (5)
4. Cows and sheep are found here. This Canadian syrup tastes great on pancakes (5,5)
6. A crying girl's name (7,6)
10. I live in a body of saltwater and am found in sandwiches, salads and sometimes on people's eyelids (3,8)
12. A highland sad longing for someone or something that you do not have (5,4)
13. You might make sandcastles here (5)
15. The capital city's mode of flight (6,5)
16. Sounds like a female sheep (3)
18. A ski resort town in Colorado's Rocky Mountains (5)



**Across**

- 5.** A canine cluster of trees (7)
- 7.** A British prime minister (5)
- 8.** Without this there would be no Nutella (5)
- 9.** Berries used to flavour gin (7)
- 10.** Produced by fire (3)
- 11.** Citrus fruit (4)
- 12.** A straight spike used for spinning wool fibres into yarn (7)
- 14.** In a popular festive carol this hangs out with ivy (5)
- 17.** The opposite of sour. Upper body and a hard shell around a seed (5,8)
- 19.** A fruity crustacean (4,5)



### Mammal Picture Match

Can you match the zoomed in photo to the name of the mammal?





**Muntjac Deer**

**Fox**

**Water Vole**

**Mole**

**Hedgehog**

**Hare**

**Weasel**

**Badger**

**Common Shrew**

**Fallow Deer**

**Otter**

**Pipistrelle Bat**

**Red Squirrel**

**Rabbit**

**Wood Mouse**

### British Woodland Plants Word search

H	A	B	C	D	E	F	F	O	X	G	L	U	V	E	G	H	I	J	D
E	U	T	H	G	B	A	S	R	J	I	Z	Y	O	N	A	Z	S	K	O
R	V	O	I	F	H	E	R	B	R	O	B	E	R	T	B	A	T	L	G
B	W	S	J	E	N	O	M	E	N	A	D	O	O	W	C	Y	U	M	V
R	X	L	K	E	C	Z	U	Q	K	H	A	X	P	M	D	X	V	N	I
O	Y	R	I	D	E	Y	T	P	L	G	B	W	Q	L	E	W	E	O	O
B	Z	Q	L	L	D	X	U	O	B	L	U	E	R	K	F	N	W	P	L
O	A	P	M	C	Y	W	V	N	M	F	C	V	S	J	I	E	X	Q	E
R	B	A	N	B	E	O	W	M	N	I	D	U	T	D	L	V	Y	R	T
T	C	L	O	I	F	V	F	L	O	E	E	T	N	I	G	O	Z	S	T
Y	F	O	P	V	G	U	X	T	P	D	F	A	U	H	H	U	A	D	U
R	D	O	Q	Y	H	T	Y	K	H	C	L	S	V	G	I	T	B	O	V
U	E	N	X	A	A	S	Z	J	Q	E	G	E	W	O	J	S	C	G	W
C	F	M	R	G	I	R	A	I	C	B	V	R	X	F	K	R	D	S	X
R	G	L	S	Z	L	Q	B	R	R	A	H	A	Y	E	L	Q	E	M	Y
E	H	K	T	Y	J	O	E	H	S	Z	I	Q	L	D	M	P	C	E	Z
M	I	J	U	X	K	S	V	G	T	Y	J	P	Z	L	N	O	I	R	A
S	I	I	V	W	S	P	C	E	U	X	U	O	A	C	E	N	L	C	B
G	J	H	W	E	L	O	D	F	V	W	K	N	B	B	O	Y	R	R	C
O	K	G	L	V	M	N	B	L	U	E	B	E	L	L	P	M	A	Q	D
D	L	F	X	U	W	M	E	E	W	V	L	M	C	A	Q	L	G	P	E
V	M	E	Y	O	N	L	F	D	X	U	M	L	D	Z	R	K	D	O	F
U	N	D	N	T	O	A	G	C	O	T	N	K	E	Y	S	J	L	N	G
T	O	S	Z	S	P	K	H	B	Y	S	O	I	F	E	T	I	I	M	H
S	P	C	A	R	Q	J	I	A	Z	R	P	J	G	X	U	H	W	L	I
R	Q	B	S	N	O	W	D	R	O	P	Q	I	H	W	V	G	F	K	J

Can you find all the woodland plants listed below in the word search? There is also a bonus plant which is not on the list for you to find.

Bluebell  
Wood Anemone  
Wild Garlic  
Lesser Celandine  
Dog Violet  
Foxglove  
Snowdrop  
Dog's Mercury  
Lily of the Valley  
Herb Robert

**Bonus Plant:**